

Built Pedagogy

Architecture and Urban Design

Squire and Partners is one of the UK's leading architectural practices, and has been designing and executing exceptional buildings for over thirty years.

The practice has extensive experience of working with end-user education organisations such as the London School of Medicine and Dentistry, The British Council and the Limehouse Youth Club. Our experience at UNISON, Lancaster University, The Hurlingham Club and elsewhere has provided the practice with experience of designing flexible, adaptable and integrated spaces for end users. The practice has also undertaken feasibility work for Imperial College London at their main campus in South Kensington, and a masterplan feasibility for King's College London's Strand campus. The practice has a clear understanding of the complexities of campus requirements in an urban setting.

Construction Techniques

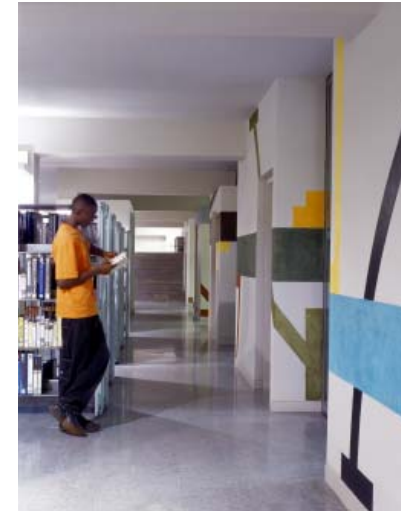
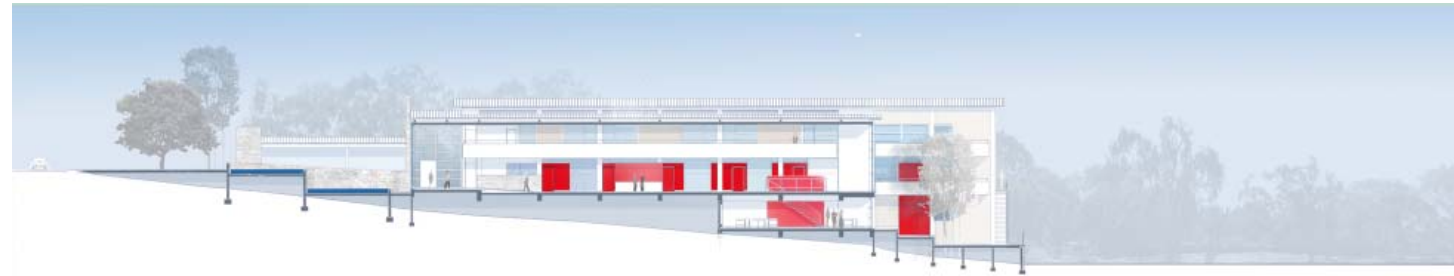
Squire and Partners is at the forefront of architectural innovation and technology, with our most recent research and development project, the Reiss Headquarters in London, picking up several industry awards. The practice actively researches new building materials, and collaborates with the very best structure and servicing experts from the early stages of the design process.

Integrated Design - British Council Nairobi

Indigenous and sustainable materials are researched and used wherever practicable, as with the education facility for The British Council in Nairobi, Kenya. Local terrazzo and Nairobi Blue stone were used in the building, rooting it firmly in its context. The design responded to both the culture of the Council in East Africa and the site context of Central Nairobi, creating a dramatic, beautiful and flexible teaching and learning environment for the Council's operations. The design exploited the natural fall of the site, utilising the local climate and the site's orientation to passively control the building's environment, with facades designed to mitigate as much of the glare of the sun as possible. A large overhanging roof provides shading and a screening wall of plants and vegetation filters a dappled light through to the cool interiors. The project has been published internationally and has won an award for its design. The naturally ventilated building offers areas for private study, conventional classrooms, technologically high-spec classrooms, research facilities, a large reference library and catering facilities.

Discussion, exhibition, display

Squire and Partners' working practice is based on discussion and dialogue as part of the design process, and the practice's award winning offices are centred on this principle. Flexible working spaces, including quiet contemplative spaces as well as open forums, create a balanced working environment, particularly where academic study is concerned.



UNISON Campus Headquarters

This design process is further illustrated through our work with the UK's largest trade union - UNISON - whose headquarters campus we are currently constructing. The desire here is for flexible well-designed spaces to encourage communication and creativity. The contract includes the design and fit-out of all office areas, including cafes, break out spaces, touchdown areas and adaptable, fully-flexible meeting spaces for seminars, group meetings, conferences or auditorium style presentations. Squire and Partners is specifying all furniture and fittings, and is working with a graphic designer to create graphics for the cafe spaces, and for the activity zones on each floor.



The Academic Environment

Lancaster University - Postgraduate Centre for Excellence in Teaching

The brief required a new 'front door' and strong identity for the TEMPUS faculty, which would include a state of the art lecture theatre, PC lab, seminar rooms and social spaces, to provide an excellent learning environment whilst encouraging interaction between staff and students. The design also needed to be adaptable for future changing needs and uses. Squire and Partners' study allowed for a new master plan which centred round the creation of a 'garden square', enhancing connections across the site, whilst acting as a buffer between the academic departments and halls of residence, and reversing the 'inward looking' nature of the existing 1960's campus estate.

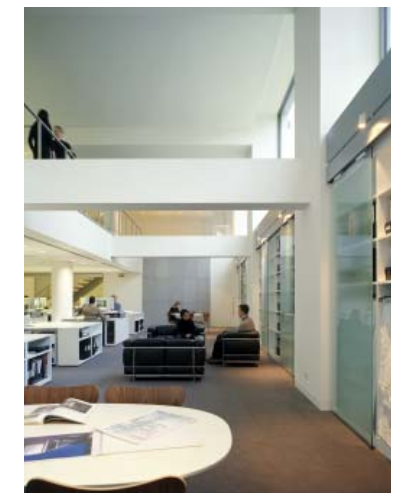
The Squire and Partners design is organised around a triple height glazed circulation space facing the square, with the main teaching and learning spaces on the ground floor, and technical labs and library at first and second floors. The circulation space also features reading galleries and break-out spaces with sofas for relaxation. The design of the academic rooms creates a horizontal window which allows views out and light in at desk level, with adaptable private spaces allowing quiet study. The main lecture theatre is a free form element, reflectively clad, visually contrasting with the masonry construction of the existing building. The new building connects to the existing Statistic Faculty via a glazed bridge, with views from the old building into the new centre.



Work environment - Reiss Headquarters

Squire and Partners' award-winning Reiss Headquarters is a bespoke design, with people at the heart of the design process. All elements of the design are specifically tailored to the needs of the client, and the people who occupy and use the space. One of the problems with Reiss's previous office, and key to the design of the new space, was the relationship between the various departments. Careful thought was given to the arrangement of the spaces and the connection between them. The second floor houses production, merchandising and cutting rooms, with designers on the third floor - divided into womenswear and menswear - and the executive offices, presentation suites and buyers facilities located at fourth floor.

Whereas Reiss's previous office lacked coherence, the new office encourages the constant flow of work and ideas between departments, with the open, central staircase creating a desire for movement thereby encouraging communication. The flow of work is replicated in the arrangement of these floors, with the work process progressing from the top to the bottom of the building and the retail space below. Flexibility is provided in all aspects of the design, from the bespoke clothes rails which can be wheeled in and out of offices, to the concealed storage in the executive offices and presentation suites, integrated audiovisual systems, and adaptable model changing rooms and storage areas. Work and concept boards can be displayed in various ways, with provision for the display of clothing, accessories and shoes integrated into walls and furniture. Glazed meeting rooms feature semi-sheer fabric divides which can be used to provide privacy or to open out the spaces to create a more open feel.



77 Wicklow Street - Squire and Partners' Offices

An attractive and effective work environment is key to attracting and retaining staff. As at Reiss, the design of our own offices was based on the principle of attracting and retaining the best staff. 77 Wicklow Street has won several awards and have been instrumental not only in attracting staff, but in illustrating to clients and consultants the difference good design can make. For two of our end-user clients - UNISON and Reiss fashion house - the visit to our offices cemented their commitment to our design philosophy.

Flexibility and choice of work styles

Several projects we have undertaken for end-users, from education clients to international corporations, have given us an understanding of the array of requirements for study, discussion and debate. Through our experience, we design spaces which work on a technological, flexible, aesthetic and a human level. Examples of this are the 400-person debating chamber at UNISON, laboratories and study areas for St Bartholomew's College in London, and the Jalisco State Library in Guadalajara, Mexico.

The Design Studio

Interaction

Interaction and dialogue is key to successful learning and creativity, and this is reflected in the design of each of the projects illustrated in this submission. We have a great deal of experience of designing bespoke spaces for end-users such as HSBC, UNISON, The British Council, Derwent London, Reiss, Lancaster University, Laban dance studios, the Limehouse Youth Club amongst others. A selection of these projects is illustrated here.

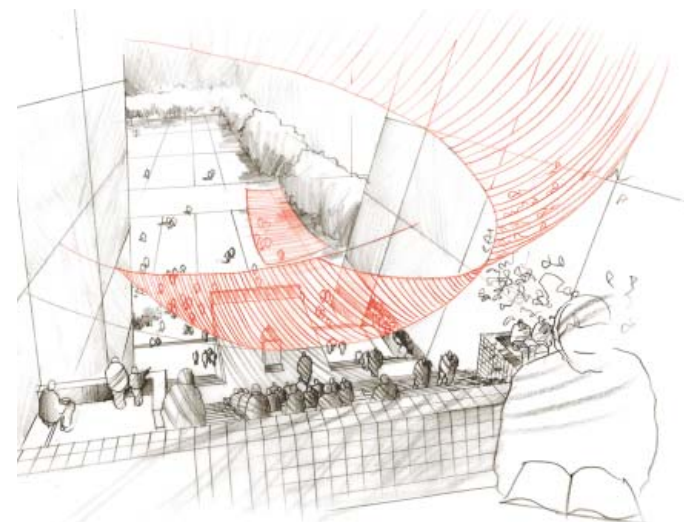
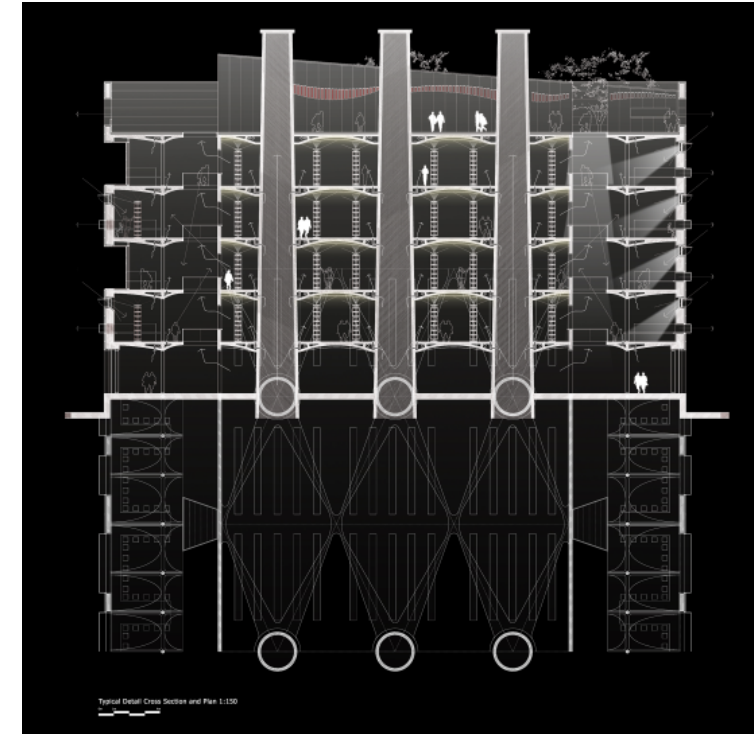
Acoustic and visual privacy, addressing technology

Squire and Partners has designed a range of learning environments with a specific focus on video-conferencing, audio-visual and projection and presentation spaces, where acoustic performance is paramount. The spaces and technology are designed to be flexible, easily accessed, but largely concealed from view. Whilst open plan spaces for dialogue are important, the success of any working space is also dependent on the provision of areas for quiet and contemplative study.

The Design Studio should be a place which inspires, informs and facilitates exploration and learning.

Jalisco State Library, Guadalajara, Mexico

The design for the Jalisco State Library Competition envisaged a powerful tectonic language of monumental forms. The large solid shapes are part of an approach that uses thermal mass as both an environmental strategy and as a source of poetic inspiration. Subverting the typical library form where books surround a central reading room, this library locks them away in a vault-like structure safe from the elements, and surrounded with public spaces. Inspired by the remarkable environmental stability of termite mounds, a complex labyrinth was designed to ventilate the building passively. During the night, air is sucked into the passageways where it is cooled by the thermal mass, while, during the day, the air rises up to cool the building and is eventually released through a series of expressive conical towers. The building's centrepiece is a long formal staircase, directly reminiscent of Mayan temples in the Yucatan peninsula. It also echoes the traditions of Indian and Burmese stupa, which use a rising stair as a metaphor for the path to enlightenment. On its surface the staircase provides a place for public readings under a series of lightweight canopies and, at its summit, cafes and bars look out over the city. Below the stair lies the spiritual heart of the scheme: a chamber lit through an alabaster wall behind which books are stacked. When the books are in use in the reading rooms light floods in. The main south elevation facing the square has two long horizontal openings on each floor. The lower opening creates views for readers studying and provides a symbolic connection with the square and the city. The upper clerestory window allows light to fall into the plan to create an intimate and contemplative atmosphere.



The Living Building

Sustainable design

Squire and Partners works with the client to deliver a building of the highest environmental standards available within the scheme's type and location. As part of our undertaking to create more sustainable buildings, the practice subscribes to the Carbon Buzz scheme, which seeks to create environmental benchmarks for sustainable developments in the UK, assessing success and efficiency to inform future designs. We always aim for the highest sustainability ratings, and seek to exceed the requirements of the UK's already demanding requirements in terms of efficiency and minimising the use of natural resources.

Our increasing involvement with large-scale projects has intensified our commitment to taking full account of the social and environmental issues relevant to urban design. The onus is on the urban designer not only to comply with the most recent legislation but to exceed it.

Adjustable environment, sun shading and natural ventilation

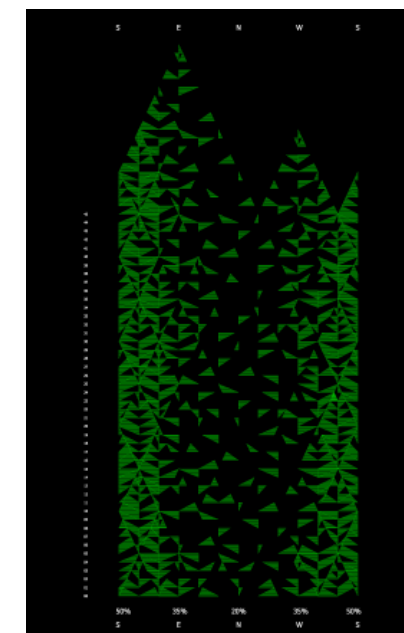
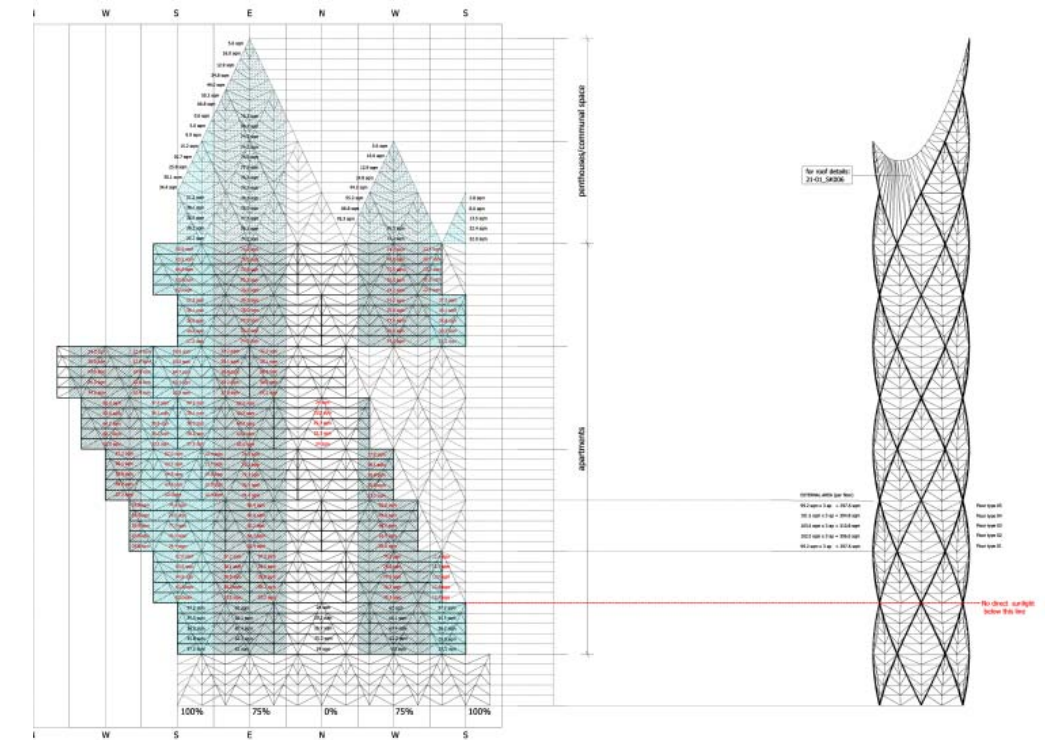
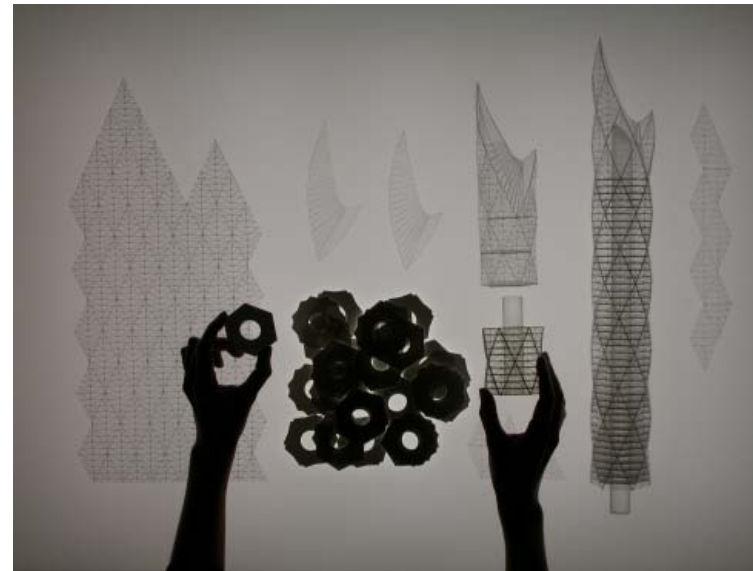
We have designed many projects which rely on natural ventilation, photovoltaic panels, green roof insulation, bore hole technology and recycling of waste and power. Our benchmark, research-based project, the Leaf Tower, is based on the premise that a tower can generate enough energy through harnessing available sunlight, to supply a 100% supply of electricity to the building users.

Adaptable flexible spaces, high quality natural light/ventilation

Flexible spaces which adapt to suit several different uses can be seen in many of our completed projects. Working closely with end users we have been able to apply technology, spatial and furniture design to create maximum flexibility. The manipulation of sunlight and fresh air is key to many of our projects, and can be seen to dramatic effect at Reiss HQ, Jalisco State Library and British Council, Nairobi. Water and planting also play a key role in defining the environment in which buildings sit.

Take advantage of local climate conditions

We intend to assess the site surroundings in terms of orientation, natural geography and geology. We would seek to re-use rainwater and use grey water systems to supplement mains water supplies. Green roofs are installed where practicable, featuring the planting of indigenous flora and fauna which could provide cooling/warming insulation to the buildings, and could provide new natural habitats if appropriate (for example, at Creekside West, a brown roof has been included in the design, to provide a habitat for black redstarts).



The Leaf Tower - benchmark research project

Capability and Process

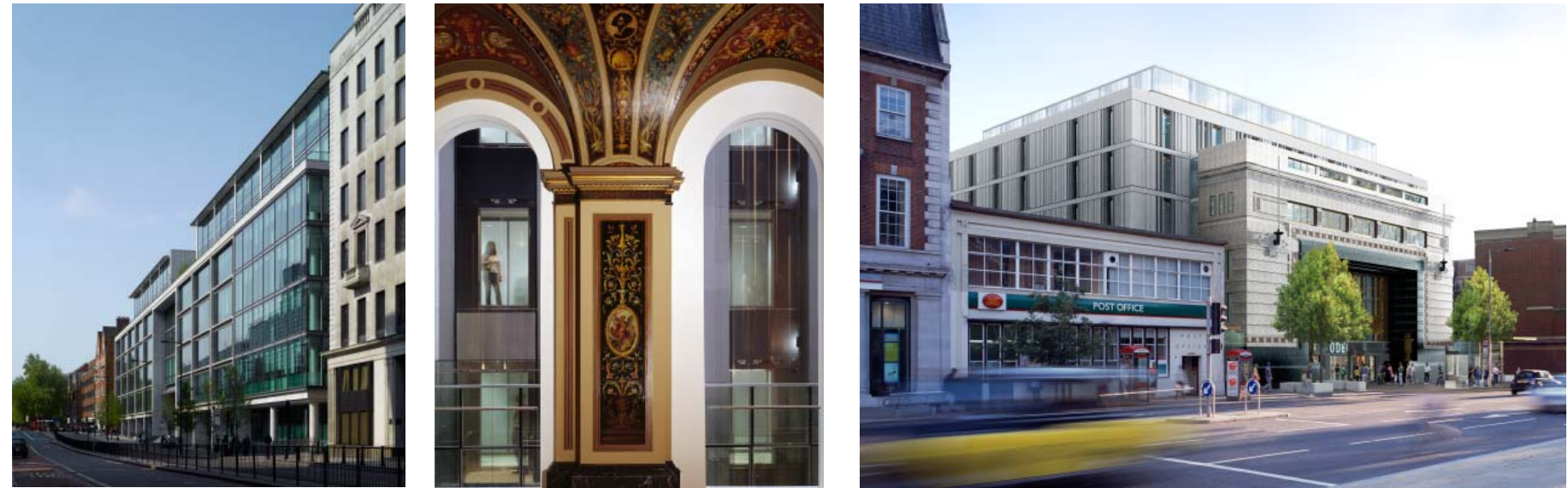
Projects of this size, scale, type or budget

Squire and Partners is a 100-strong practice of architects with over thirty years experience of creating buildings in the UK and abroad. The practice is registered with the Royal Institute of British Architects and the Architects' Registration Board. We have completed numerous buildings of a comparable size, scale and budget as the Faculty of Architecture, Building and Planning - stated as 18,000 sq m. We are used to working with budgets around the stated AU\$90m (UK £45m) and have an excellent track record of delivering buildings on time and on or under budget.

Examples of comparable projects include:

Belgrave House for Grosvenor Estate	25,000 sq m	£58m
HSBC Bank HQ, for HSBC Bank plc	20,000 sq m	£47m
Odeon Kensington, for Northacre	21,000 sq m	£55m

Details of these and other projects can be found at www.squireandpartners.com



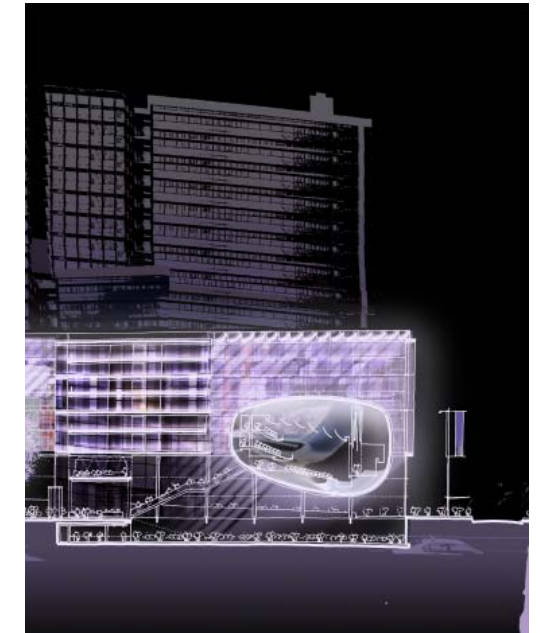
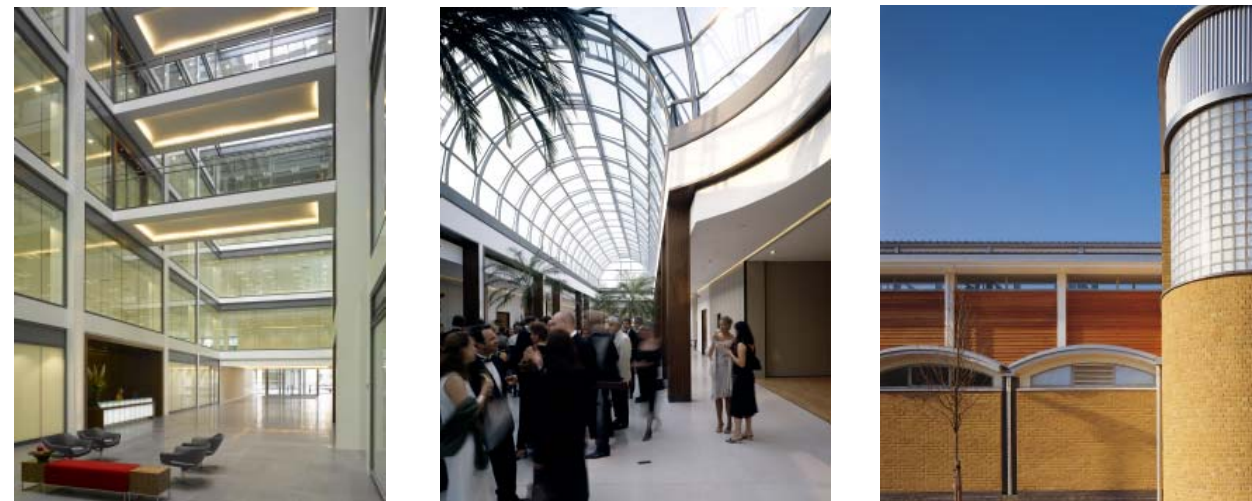
Capacity to deliver the project in Melbourne

Matthew Holloway, a Director at Squire and Partners, moved to Melbourne in December 2008. Early discussions about creating a satellite office in Melbourne were taking place when the University competition was announced. We would propose employing Matthew to run the satellite office if we were to be successful.

We would call upon consultants with whom we have a good working relationship, and who have offices based in Melbourne; namely Arup, WSP and Gleeds. We propose to initially engage a structural engineer, services engineer, cost consultant and project manager, and ideally retain the role of lead consultant and architect.

Intended process of collaboration with the Faculty and University

To deliver an outstanding project of this importance and scale, we would begin with setting up a series of workshops between the University and the design team to ensure all aspirations and expectations of the project are fully communicated and understood. Working collaboratively with an end user is our preferred method of working, and we relish the challenge of an exacting brief. Regular reviews both internally at Squire and Partners, and with the whole client and design team, would be imperative throughout the design process.



Top left to right: Belgrave House, HSBC, Kensington Odeon
Middle left to right: Moor Lane (Lasdun refurbishment), Hurlingham Club, Limehouse Youth Club, Leeds University Campus building
Bottom: Howick Gallery



Previous work and client references

A selection of project is illustrated here, with projects described in more detail elsewhere in this submission.

Client References:

Emma Vergette at The British Council, 0044 20 7389 4045

John Cole at UNISON, 0044 20 7551 1292

Merit

Architectural merit

Squire and Partners have been designing and executing buildings for a period of over 30 years.

The practice has a reputation for delivering exceptional buildings while maintaining a clear understanding of the commercial objectives involved in the development process.

While a great deal of the practice's work is London based, Squire and Partners have also worked on projects in Manchester and Liverpool, and on overseas projects, including the Education and Cultural Centre for the British Council in Nairobi, completed in 2006, and on projects in Romania, Dubai and Bratislava. The practice achieved joint second place in the international competition to design a new public library facility in Guadalajara, Mexico, and were the only UK practice to be recognised by the judges.

Recent Awards

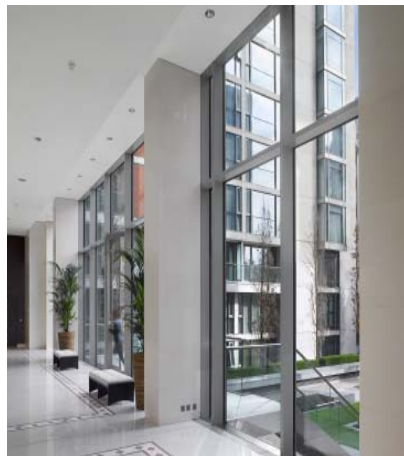
2009	Reiss HQ	Civic Trust Award / BCO Award RIBA Shortlist
2008	Reiss HQ	World Architecture Festival Award shortlist
2007	Landmark	Daily Mail Property Awards
2006	The Knightsbridge British Council Nairobi	Residential Development of the Year The Property Awards Gold Medal, Architectural Association Kenya
2005	261 City Road	Housing Design Award Shortlist
2004	06 St Chad's Place British Council Nairobi	FX International Interior Design Award AR / Cityscape Awards Shortlist
2002	77 Wicklow Street	British Council for Offices Award

Publications and Exhibitions

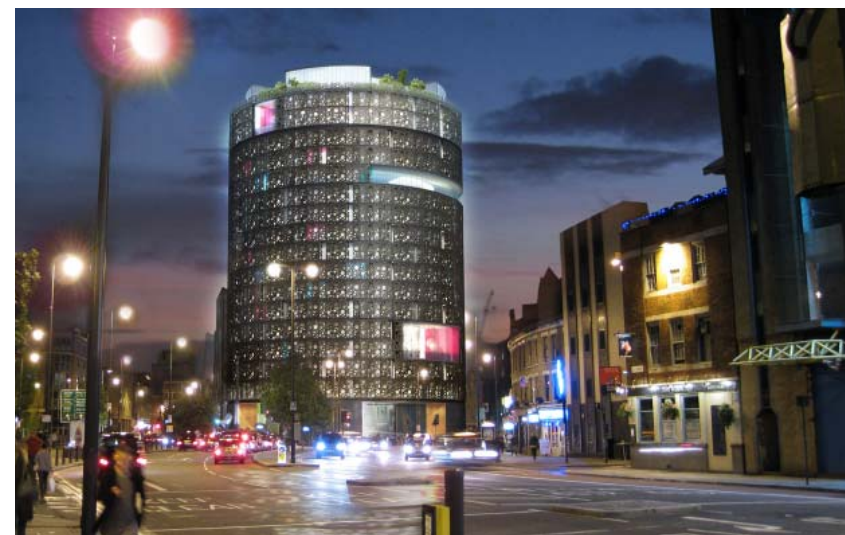
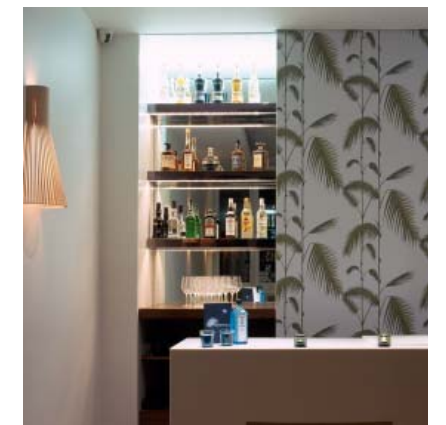
Squire and Partners' work has been featured in international publications such as DETAIL magazine, Domes (Greece), The Architects' Journal, Architectural Record, Wallpaper, Vogue Brazil, Elle Decoration and Conde Nast Traveller.

Projects have also been featured in various publications, such as *London High* (Herbert Wright/Frances Lincoln), *Architectural Voices* (David Littlefield/Wiley Academy), *New London Interiors* (Kieran Long/Merrell) and *1001 Buildings to See Before You Die* (Mark Irving/Cassell).

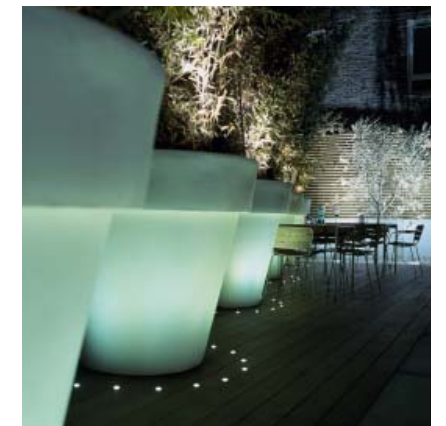
Work has been exhibited at The Royal Festival Hall, the Royal Academy Summer Exhibition, the Festival dell'Architettura in Milan and at the Royal Institute of British Architects in London.



Squire and Partners' winning entry - Future House Exhibition



Competition winning hotel scheme in East London



The Rockwell Hotel - featured in Conde Nast, Vogue Brazil, Elle Decoration

Award winners - L-r top - 06 St Chad's Place, The Knightsbridge
L-r bottom - 77 Wicklow Street, Reiss Headquarters